



Council Offices
The Priory Centre
St. Neots
Cambs
PE19 2BH

Tel: 01480 388913
Fax: 01480 388915

ed.reilly@stneots-tc.gov.uk

Mr S Ingram
Head of Planning Services
Huntingdonshire District Council
Pathfinder House
St Mary's Street
Huntingdon
Cambridgeshire
PE29 3TN

30 June 2013

Dear Mr Ingram,

St Neots Neighbourhood Plan

St Neots Town Council has formed a Neighbourhood Planning Group. The resolution was made at a meeting of the Policy and Audit Committee on 22 January 2013 and was accepted by the Town Council on 7 March 2013. One of the first tasks of the Group is to establish the Neighbourhood Plan Area.

In establishing the Area, note was taken of The Town and County Planning [The Neighbourhood Planning (General)] Regulations 2012. In particular, Part 2, Regulation 5 which states:

- (1) Where a relevant body submits an area application to the local planning authority it must include –
 - (a) a map to which identifies the area to which the area applications relates.
 - (b) a statement explaining why this area is considered appropriate to be designated as a neighbourhood area. and
 - (c) a statement that the organisation making the area application is a relevant body for the purpose of Section 61G of the 1990 Act.

St Neots Town Council is a relevant body within the meaning of Section 61G(a) of the Act and respectfully requests that you designate the town of St Neots as a Neighbourhood Area; as delineated in black on the attached map.

The Neighbourhood Plan should cover the whole town of St Neots, which is the area covered by the Town Council, to ensure a comprehensive approach. This includes the parishes of Eynesbury, Eaton Socon, Eaton Ford, St Neots East and Priory Park. This inclusive approach will enable the Neighbourhood Plan to bring about positive change for the whole town and ensures that no part of the town is excluded.

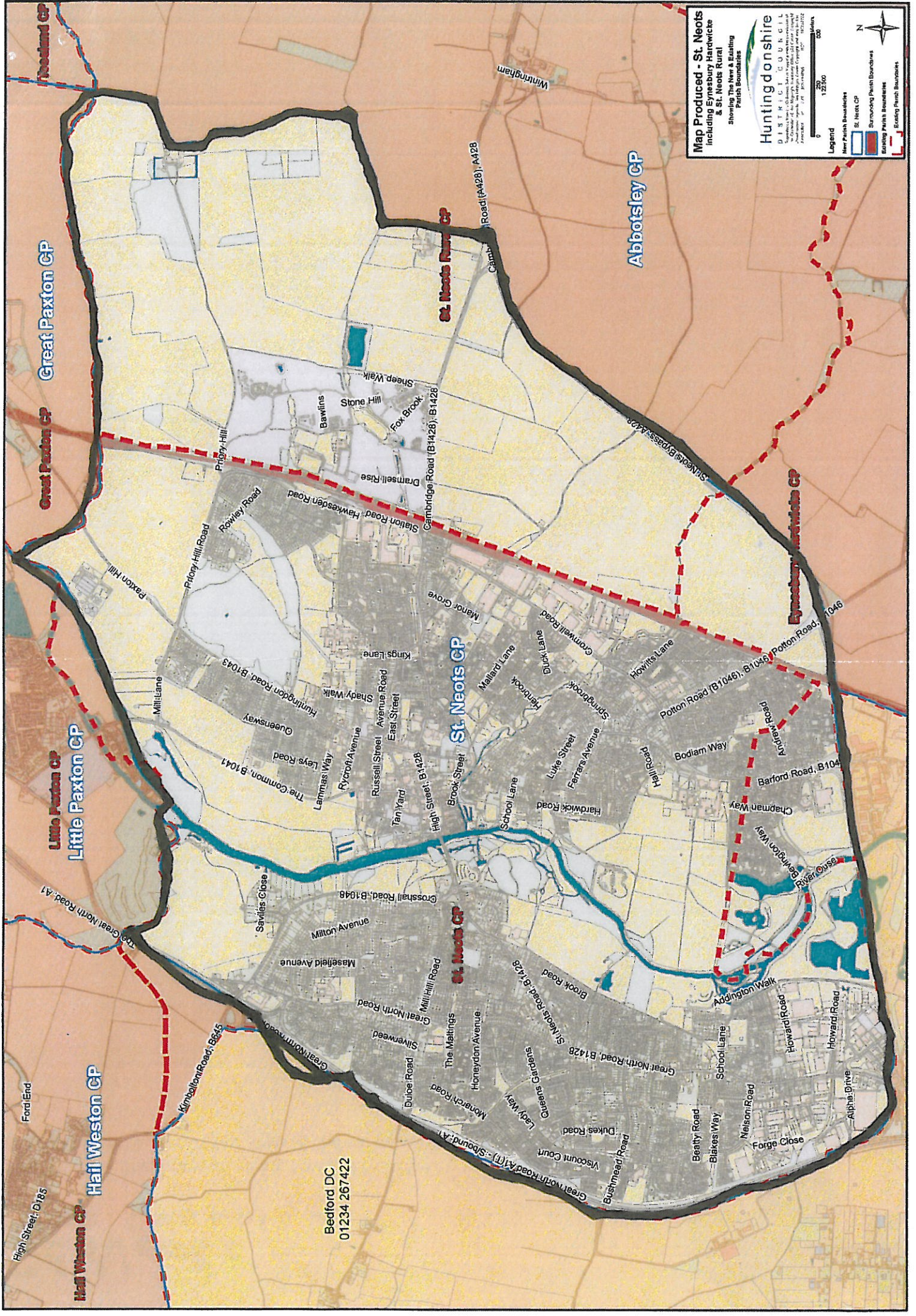
Please can you advise me of the date the six week consultation period will commence and keep me informed of the progress of this application.

Yours sincerely,



E Reilly

Town Clerk: Edward Reilly FCMI MILCM



Map Produced - St. Neots
 including Eynesbury Harwicks
 & St. Neots Rural
 Parish Boundaries

Showing The New & Existing
 Parish Boundaries

Huntingdonshire
 DISTRICT COUNCIL

Huntingdonshire District Council, 100, High Street, Huntingdon, Cambridgeshire, PE18 6AA. Tel: 01455 561111. Fax: 01455 561112. Email: info@huntingdonshire.gov.uk

Legend

- New Parish Boundaries
- St. Neots CP
- Surrounding Parish Boundaries
- Existing Parish Boundaries
- Existing Parish Boundaries

Scale: 0, 1250, 2500, 5000 Feet

North Arrow

Bedford DC
 01234 267422

Hail Weston CP

Hail Weston CP

Little Paxton CP

Little Paxton CP

Great Paxton CP

Great Paxton CP

St. Neots Rural CP

St. Neots CP

St. Neots CP

Abbotsley CP

Eynesbury Harwicks CP

High Street, 0185

Ford End

The Great North Road, A1

The Common, B1041

Leys Road

Queensway

Huntingdon Road, B1043

Milit Lane

Paxton Hill

Pitoy Hill Road

Rowley Road

Station Road

Hawkesden Road

Drumself Rise

Cambridge Road (B1428), B1428

Fox Brook

Stone Hill

Bawlines

Sheep Walk

Manor Grove

St. Neots Bypass, A428

Wingingham

Abbotsley CP

St. Neots CP

St. Neots CP

St. Neots CP

St. Neots CP

St. Neots CP

St. Neots CP

St. Neots CP

St. Neots CP

St. Neots CP

St. Neots CP

St. Neots CP

St. Neots CP

St. Neots CP

St. Neots CP

St. Neots CP

St. Neots CP

St. Neots CP

St. Neots CP

St. Neots CP

St. Neots CP

St. Neots CP

St. Neots CP

St. Neots CP

St. Neots CP

